

Clarino (Sib) 4

SINFONIA

Op. 106

Durata circa 6'25"
Versione storica

Amilcare Ponchielli (1834-1886)
A cura di Emiliano Gusperti

Andante un poco mosso

ff pp

8 pp ff cresc. (pp)

14

20 Allegro vivo ff

24 deciso assai

30 (p) pp

37 ff (p) pp

43 tr (f) (pp) (f)

50 cresc. ff

[illegible]

120



125



129



135



141



148



155



162



168



172



176-191

192

p (cresc.) *ff*

198

p (cresc.) *ff*

202

p (cresc.) *ff*

206

p (cresc.) *ff*

210

deciso assai

p (cresc.) *ff*

216

p (cresc.) *ff*

223

p (cresc.) *ff*

229

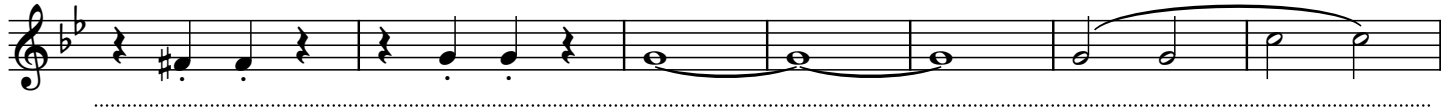
tr

p (cresc.) *ff*

236

p (cresc.) *ff*

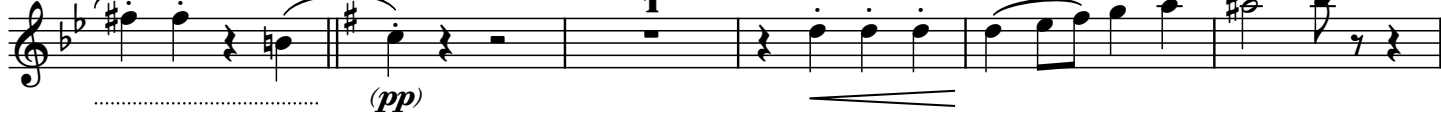
242



249



254



260



266



272



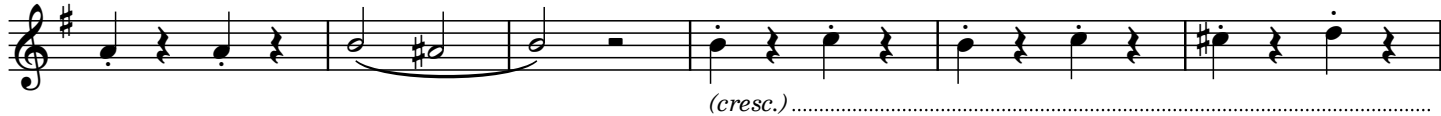
278



284



290



296



302



356



musical notation for measure 356, featuring a treble clef, a key signature of one sharp (F#), and a 4/4 time signature. The melody consists of quarter notes: F#4, G4, A4, B4, C5, and D5. The bass line consists of quarter notes: D3, C3, B2, A2, G2, and F#2. The measure ends with a double bar line.